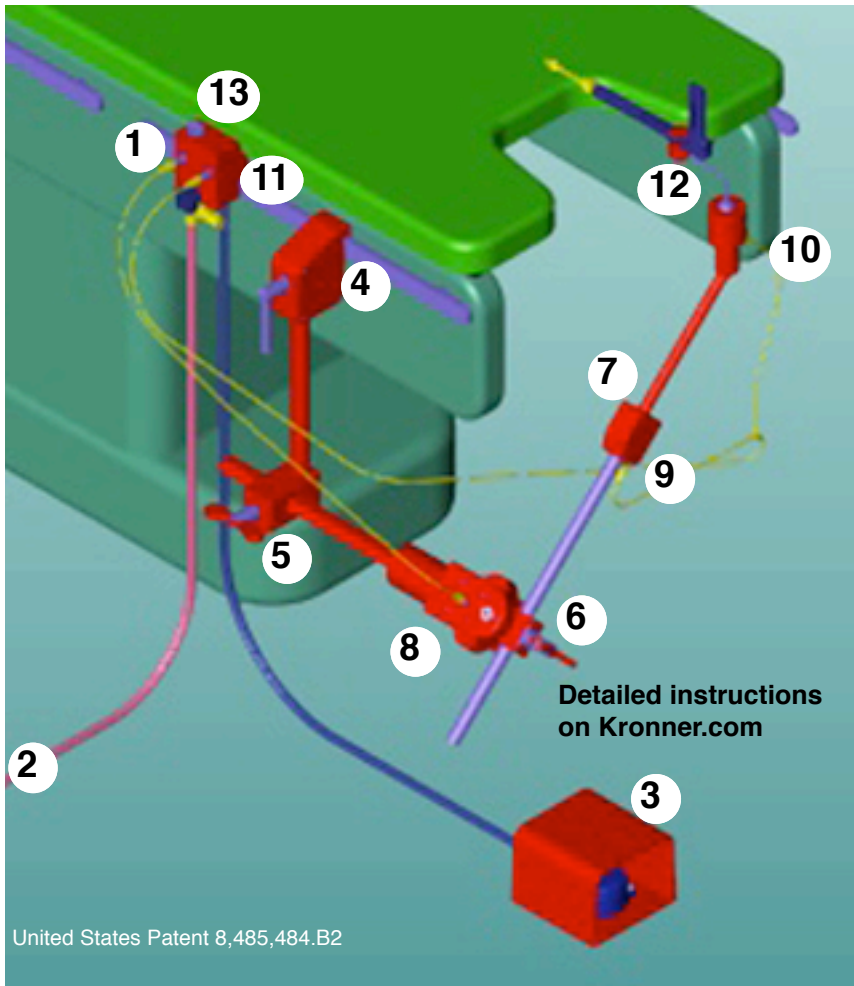


# The KRONNER SIDE-KICK

## for holding the RUMI uterine manipulator

### Abbreviated Instructions for use

for detailed instructions see the INSTRUCTIONS FOR USE booklet or CD



United States Patent 8,485,484.B2

Kronner Medical, 1443 Upper Cleveland Rapids Road, Roseburg, OR 97471  
Tel: 541-672-2543

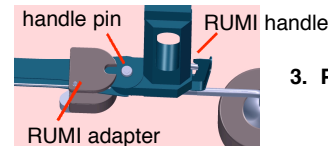
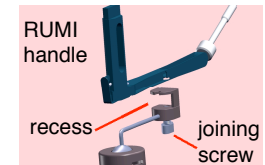
### Attaching the SideKick assembly to the operating table rail.

1. Attach the gas supply module to the operating table rail and turn off the module switch.
2. Connect the gas supply hose to the hospital nitrogen supply.
3. Position the foot pedal.
4. Attach the rail grip to the rail.
5. Slide the pivot rod into the rail grip.
6. Insert the outer arm into the pivot.
7. Insert the inner rod into the outer arm.
8. Attach the single gas line to the pivot and the other end to the gas supply module #1.
9. Attach one branch of the branched line to the outer arm luer.
10. Attach the second branch of the branched line to the inner rod ball joint luer.
11. Attach the other end of the branched line to the gas supply module.
12. Join the adapter and attached manipulator to the inner rod, see RUMI instructions below.
13. Turn the gas module switch to "ON".
14. When repositioning the manipulator, step on the foot pedal #3.

**Warning: Do not attach a gas line to a uterine manipulator, extreme danger.**

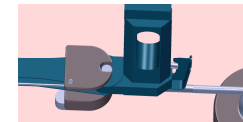
### To Join the RUMI to the Adapter

1. Set the joining screw of the adapter so the RUMI can be slid into the attachment recess of the adapter.
2. Slide the RUMI into the attachment recess of the adapter.



3. Position the RUMI adapter in front of the RUMI handle pin.

4. Slide the adapter over the RUMI handle pin.
5. Tighten the joining screw.
6. Insert the manipulator into the patient.



### Attaching the Adapter to the Inner Rod

1. Connect the adapter to the inner rod by sliding the two adapter notches over the two inner rod pins and rotating the adapter clockwise. Gas pressure must be off during this step.

